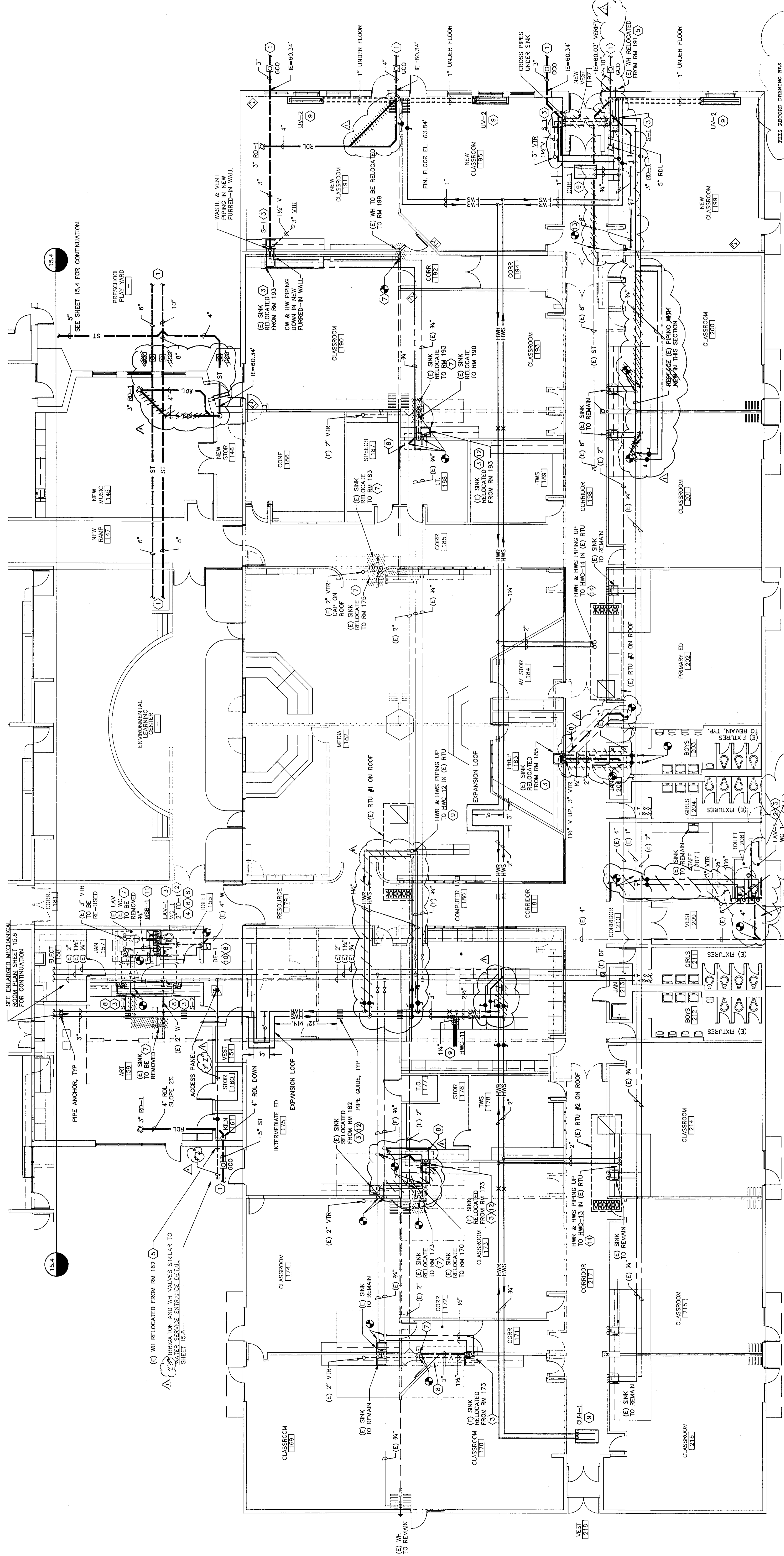


FLAG NOTES:

- ① SEE SITE PLAN FOR CONTINUATION.
- ② WATER CLOSET, 1 1/2" CW, 2" V, 4" W.
- ③ LAV OR SINK, 1/2" CW, 1/2" HW, 1 1/2" V, 2" W.
- ④ 2" FLOOR DRAIN, 1 1/2" V, 2" W. DRAINS TO BE MOUNTED 1/2" TO 3/4" BELOW FINISHED FLOOR LEVEL SO FLOOR MAY BE SLOPED TO DRAIN. REF. ARCHITECTURAL.
- ⑤ WALL HYDRANT, 3/4" CW, MOUNT AT 1' AFF. ISOLATION VALVE ABOVE CEILING OR BEHIND CABINET.
- ⑥ SEE HANDICAPPED LAV ELEVATION SHEET 15.6.
- ⑦ EXISTING CW, HW, V, AND/OR WASTE PIPING TO BE REMOVED. NEW PIPING SHALL BE INSTALLED IN PLACE BEHIND WALLS, CEILING, ETC. UNLESS OTHERWISE NOTED. PATCH AND PAINT WALLS, CEILING, ETC. TO MATCH SURROUNDING. REF. ARCH.
- ⑧ SAW CUT (E) FLOOR SLAB AS REQUIRED TO CONNECT NEW SINK TO EXISTING. VERIFY LOCATION OF EXISTING BEFORE MAKING ANY CUTS.
- ⑨ SEE HOT WATER COIL CONN. DETAIL SHEET 15.6.
- ⑩ DRINKING FOUNTAIN, 1/2" CW, 1 1/2" V, 2" W.
- ⑪ HOP SERVICE BASIN, 3/4" CW, 3/4" HW, 1 1/2" V, 3" W.
- ⑫ CONNECT CW, HW, & V FROM RELOCATED SINK TO (E) PIPING ABOVE CEILING.
- ⑬ REPLACE (E) PIPING WITH NEW CAST IRON UNDER NEW ADDITION.
- ⑭ SEE HOT WATER COIL CONN. - 3-WAY VALVE DETAIL SHEET 15.6.



THIS RECORD DRAWING HAS BEEN PREPARED, IN PART, BASED ON INFORMATION PROVIDED BY OTHERS. WHILE THIS INFORMATION IS BELIEVED TO BE RELIABLE, THE ENGINEER ASSUMES NO RESPONSIBILITY FOR ITS ACCURACY, AND THIS DRAWING IS NOT TO BE USED FOR ANY PURPOSES OTHER THAN THAT SPECIFICALLY INTENDED. THE ENGINEER ASSUMES NO RESPONSIBILITY FOR ANY ERRORS OR OMISSIONS IN THIS DRAWING OR FOR ANY CONSEQUENCES THAT MAY RESULT FROM THE USE OF THIS DRAWING. THE ENGINEER'S OBLIGATION IS LIMITED TO THE PROFESSIONAL STANDARD OF CARE AND TO THE OBTAINING OF NECESSARY INFORMATION AND VERIFICATION OF THE SAME. THE ENGINEER ASSUMES NO RESPONSIBILITY FOR ANY CONSEQUENCES THAT MAY RESULT FROM THE USE OF THIS DRAWING.

SOUTH POD PIPING PLAN
1/8" = 1'-0"



Poudre R-1 School District
CACHE LA Poudre ELEMENTARY
ADDITION & REMODEL
FT. COLLINS, COLORADO



JOB NUMBER
3144

DRAWN
T-16, U/LF

CHECKED
RDA

ISSUE
10/07/92

REVISIONS
AS BUILT

SHEET NAME
SOUTH POD PIPING PLAN

SHEET NUMBER

15.5
OF 7

BRAHAMSON ENGINEERING, INC.
419 Canyon Avenue, Suite 310
Fort Collins, Colo. 80521
Phone 221-2569

